

harman/kardon®



guide + play™

GPS-810

Portable Touchscreen Navigation System and A/V Media Player

Quick-Start Guide

Contents

English Instructions 3



The Harman Kardon® GPS-810 uses a lithium-polymer battery. Under normal operating conditions, the battery will provide superior service with a lifespan that is superior to those of other battery types. Please observe the following guidelines to protect the performance of your GPS-810 and its battery:

Do not operate the unit in ambient temperatures outside the following range: -10° C (14° F) to 55° C (131° F).

Do not store the unit even for short periods in ambient temperatures outside the following range: -20° C (-4° F) to 60° C (140° F).

Do not store the unit for long periods in ambient temperatures outside the following range: 0° C (32° F) to 25° C (77° F).

The GPS-810 will not charge the battery at temperatures above 50° C (122° F).

Le Harman Kardon® GPS-810 utilise une pile au lithium-polymère. Dans des conditions d'utilisation normales, la pile offre une durée de vie et un rendement supérieurs à celui des autres types de piles. Veuillez observer les lignes directrices ci-dessous pour optimiser le rendement de votre GPS-810 et de sa pile:

Ne pas faire fonctionner l'unité à une température inférieure à -10° C (14° F) ou supérieure à 55° C (131° F).

Ne pas ranger l'unité, même pour une courte période de temps, dans un endroit où la température ambiante est inférieure à -20° C (-4° F) ou supérieure à 60° C (140° F).

Ne pas ranger l'unité pendant une longue période de temps dans un endroit où la température ambiante est inférieure à 0° C (32° F) ou supérieure à 25° C (77° F).

La pile du GPS-810 ne se charge pas lorsque la température ambiante est supérieure à 50° C (122° F).

El GPS-810 de Harman Kardon® usa una batería de litio-polímero. Bajo condiciones normales de operación, la batería le brindará un servicio superior y una vida útil mucho más prolongada que cualquiera de los otros tipos de baterías. Siga las directrices siguientes para proteger el desempeño de su GPS-810 y de su batería:

No utilice la unidad en entornos cuya temperatura está fuera de la gama siguiente: -10° C (14° F) a 55° C (131° F).

No guarde la unidad en entornos cuya temperatura está fuera de la gama siguiente aún por periodos muy cortos: -20° C (-4° F) a 60° C (140° F).

No almacene la unidad por periodos prolongados en entornos cuya temperatura está fuera de la gama siguiente: 0° C (32° F) a 25° C (77° F).

El GPS-810 no cargará la batería en temperaturas arriba de 50° C (122° F).

harman/kardon®

www.guideandplay.com

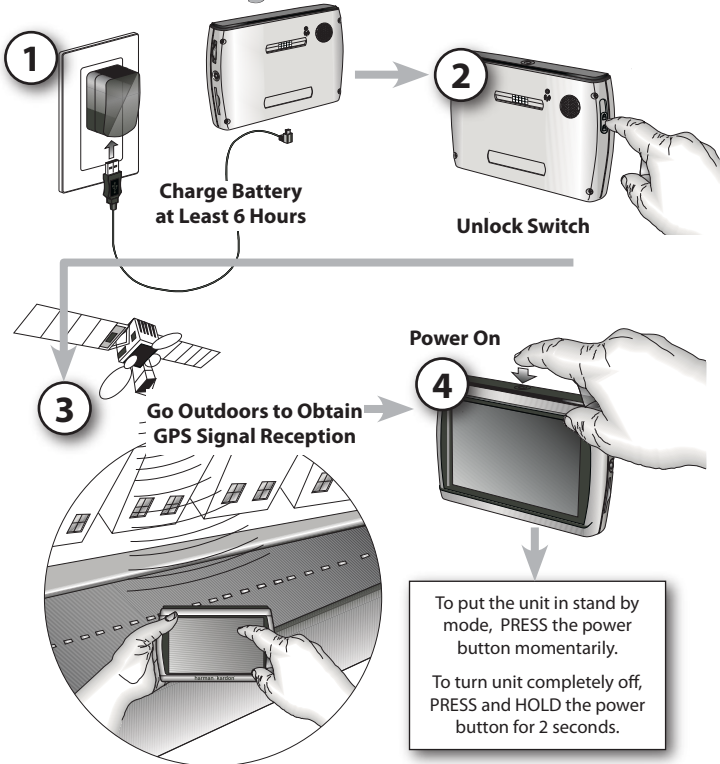
What's in the Box

GPS-810
Car Charger
Wall Charger
USB Cable
Quick-Start Guide
Carrying Case
Fold-Flat Mounting Bracket
Plastic Adhesive Disc for Dash-Mount
Wireless Remote Control w/Battery
Mounting Disc for Wireless Remote
Alcohol Cleaning Pads for Mounting Surfaces



ENGLISH

Before You Begin



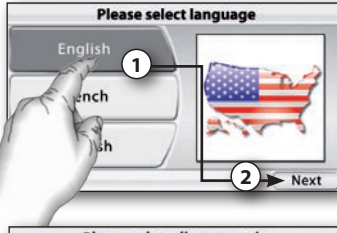
WARNING: Operation of any feature of this device while driving is dangerous. Do not operate this device while driving. Do not view or operate audio or video modes while driving.

For safety reasons, this device will cease navigation functions when the video mode is enabled. Do not attempt to disable any safety function incorporated in this device. Any alteration of this device may cause serious injury and shall void the warranty.

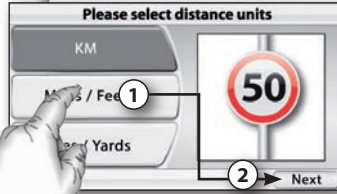
guide+play GPS-810

Setup Wizard

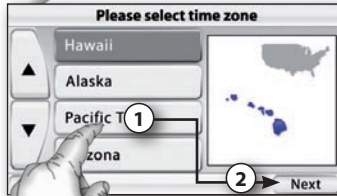
1
Select Language



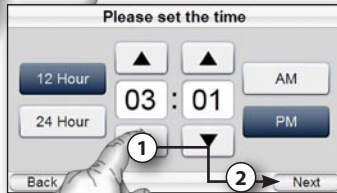
2
Select Units



3
Select Time Zone



4
Set Time of Day

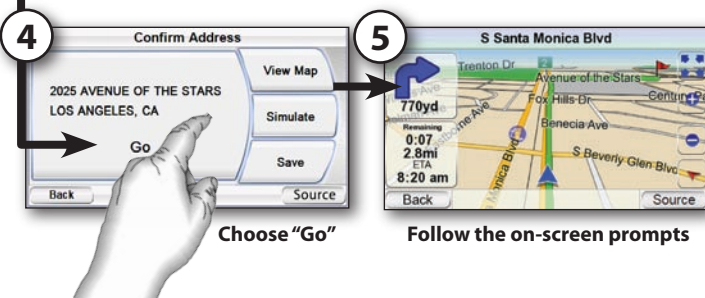
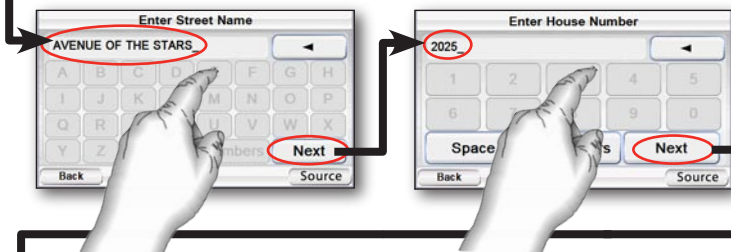
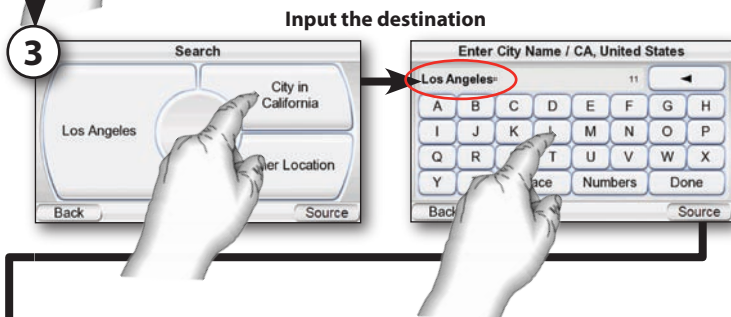
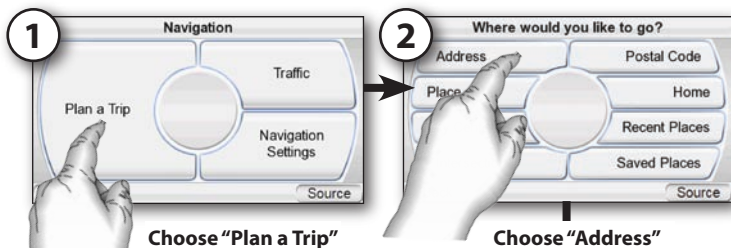


5
Finished!



The geographic information provided by this device serves as a navigational aid only and does not include information pertaining to construction, road closures, speed restrictions, road or traffic conditions, or other circumstances relevant to public safety. The driver must always be aware of the actual road conditions and surroundings, and decide whether or not to follow the information provided by this device. Obey all traffic laws and observe safe driving practices. The manufacturer does not accept responsibility for any inaccurate or incomplete information provided by this device.

Plan a Trip



Connecting a Bluetooth Phone*

* A **Bluetooth® enabled phone** is required operation with GPS-810 calling features. Please read the instructions with your particular phone to determine how to place it into "pairing" or "discovery" mode to set up the connection with GPS-810.

1

Place your **Bluetooth® enabled phone** in the "pairing" or "discovery" mode.

2

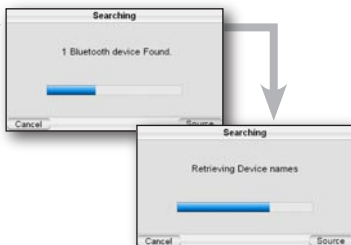
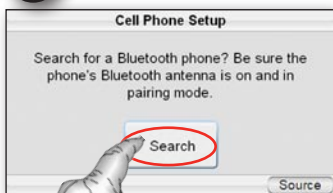
From GPS-810 Menu Select "Phone"



The first time you select "Phone" with no previous devices in the memory, the "Cell Phone Setup" screen automatically appears

3

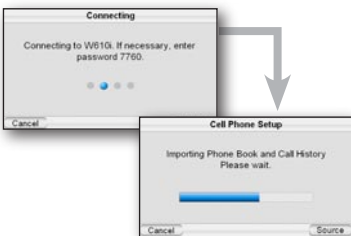
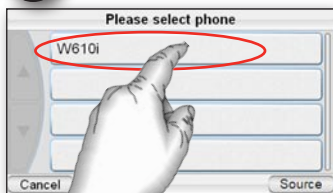
Press "Search"



GPS-810 will search and retrieve names on all **Bluetooth®** devices in range

4

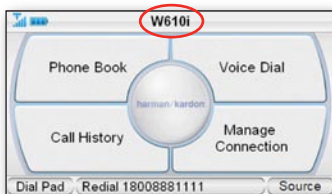
Select Phone



GPS-810 will connect to the selected device and then import the Phone Book and Call History

5

Finished!
Now you are ready to place and receive calls!



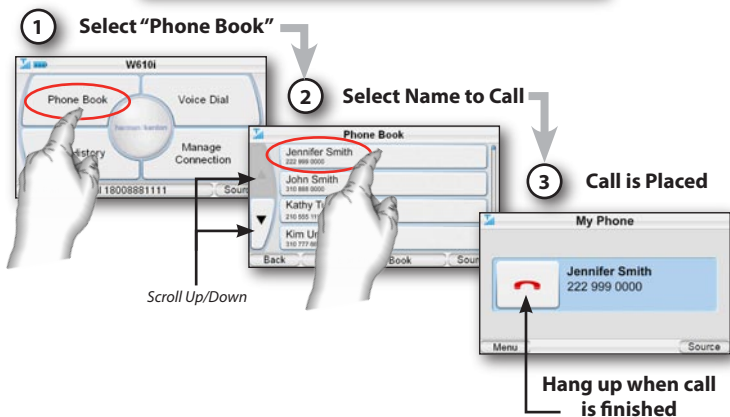
Placing and Receiving Calls

You can place and receive calls directly from the screen of GPS-810 once a phone is paired **and** an external hands-free microphone has been connected (microphone not included).

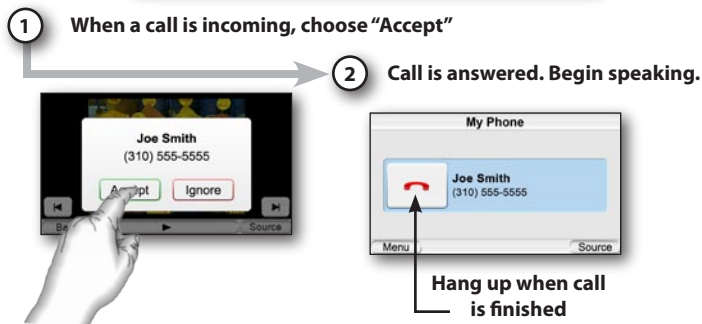
There are several ways in which to place calls



Example: Placing a call from the Phone Book

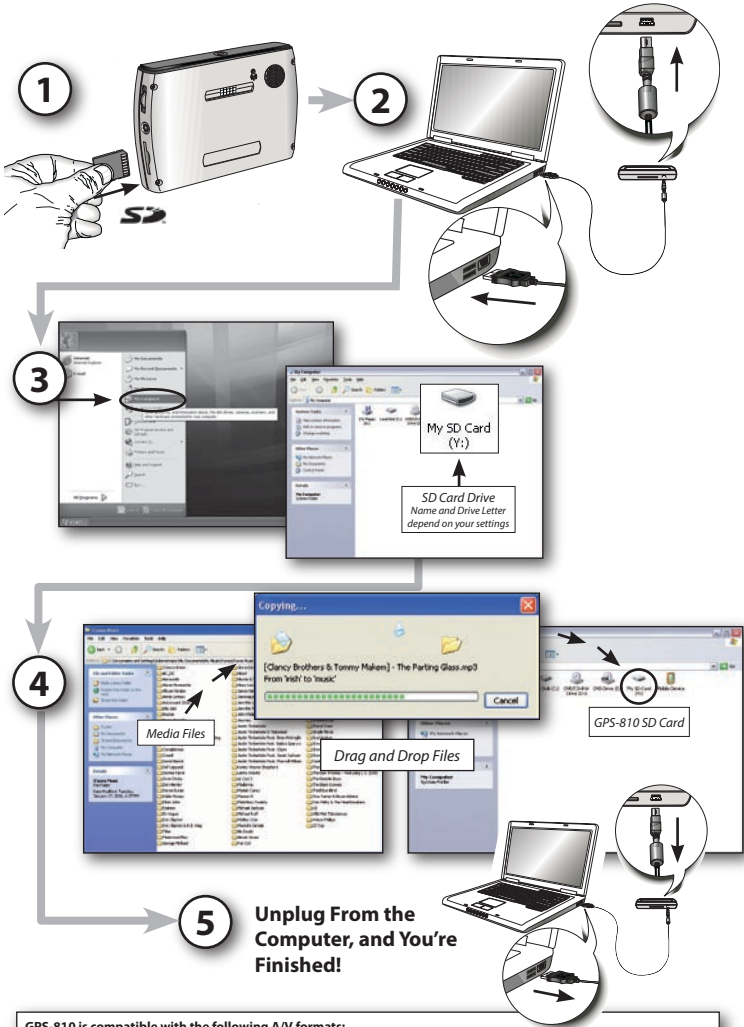


Example: Receiving an incoming call



Loading Media Files*

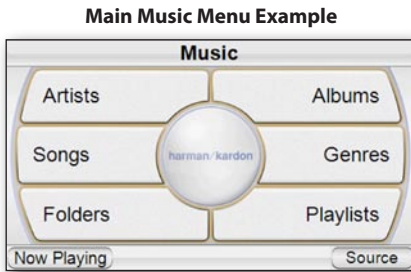
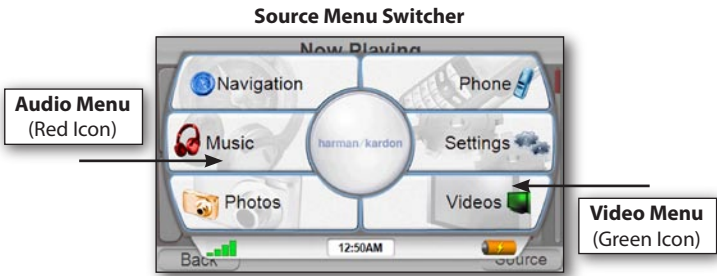
* An **SD Memory Card** is required for storage of audio and video files. This is **not included** with the unit and must be purchased separately.



GPS-810 is compatible with the following A/V formats:

- Audio**
- **MP3** VBR/CBR (8 - 448 kbps), 8 - 48 kHz, ID3 tags (v1 and v2.1 to v2.3) with album art supported.
 - **WMA** 32 kbps up to 160 kbps (VBR) and 32 kbps up to 256 kbps (CBR), WMA Lossless, WMA Pro, playback up to 48 kHz, DRM 10, ASF tag with album art supported.
 - **M4A** VBR/CBR (8 - 320 kbps), 8 - 96 kHz sample rate, M4A, MP4 extensions only. M4A tag with album art supported.
- Video**
- **MPEG-4** Max 640x480 with 20 fps with 1 Mbps data rate. ASP profile compatible. AVI extension only. 'DIV3' not supported.
 - **WMV** WMV codecs 7, 8, and 9, and Advanced Profile, DRM 10.
 - **H.264** Baseline profile only, Max 640x480 with 15 fps with 1 Mbps data rate. M4V, MP4, 3GP extensions only.

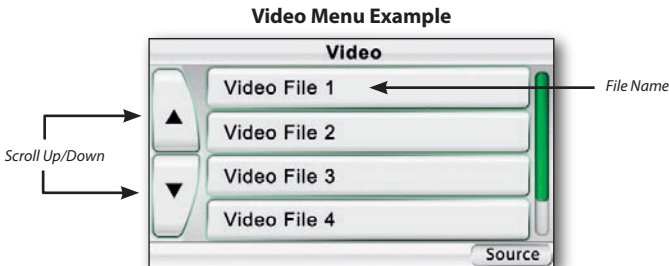
Using the Multimedia Player



Choosing **“Music”** from the source menu brings up the Main Music Menu screen. You can select music by Artist, Album, Genre, Playlist or Song, using the appropriate button. Then, navigate through the list to choose your song.



For safety reasons, this device will cease navigation functions when the video mode is enabled. Do not attempt to disable any safety function incorporated in this device. Any alteration of this device may cause serious injury and shall void the warranty.



Choosing **“Video”** from the source menu brings up the “Video” screen. You can view all the video files stored on the SD card and select one to view by pressing that file name.

In-Vehicle Installation



Do not install this device in any manner that impairs the safe operation of the vehicle. Do not install this device on any airbag panels or in the deployment field of any airbags. Do not place the device on the vehicle's dashboard unsecured. Failure to observe the installation or usage instructions may result in traffic accidents or personal injury.

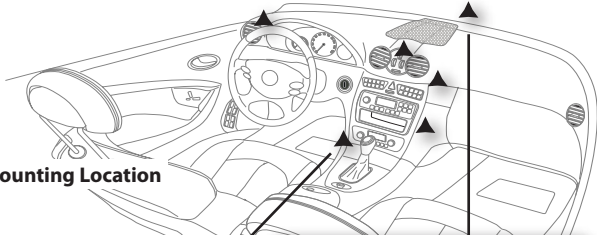


The installation of this device on the windshield, between the driver and the windshield, or otherwise in any manner that obstructs the driver's clear view of the road or traffic conditions is dangerous and may be prohibited by law. State laws in California and Minnesota (and possibly other states) prohibit the mounting of this device on the windshield, in which case other mounting methods should be used. Check your state and local laws before mounting.

Mounting the Unit

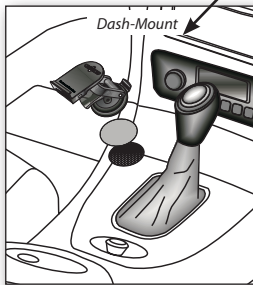
1

▲ Select Mounting Location

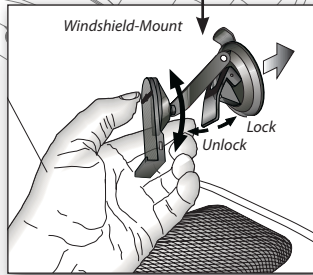


2

Install Mounting Base

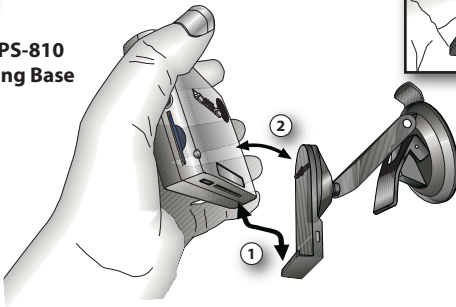


Clean dash with supplied alcohol pad.

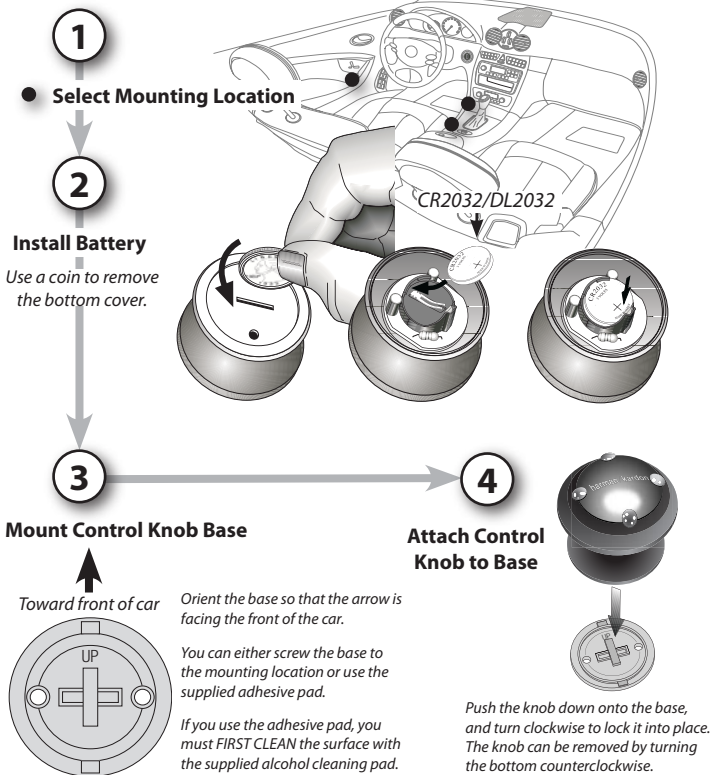


3

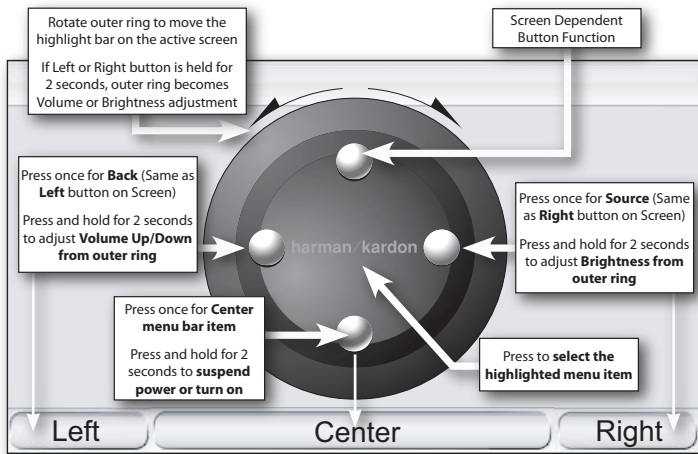
Install GPS-810 in Mounting Base



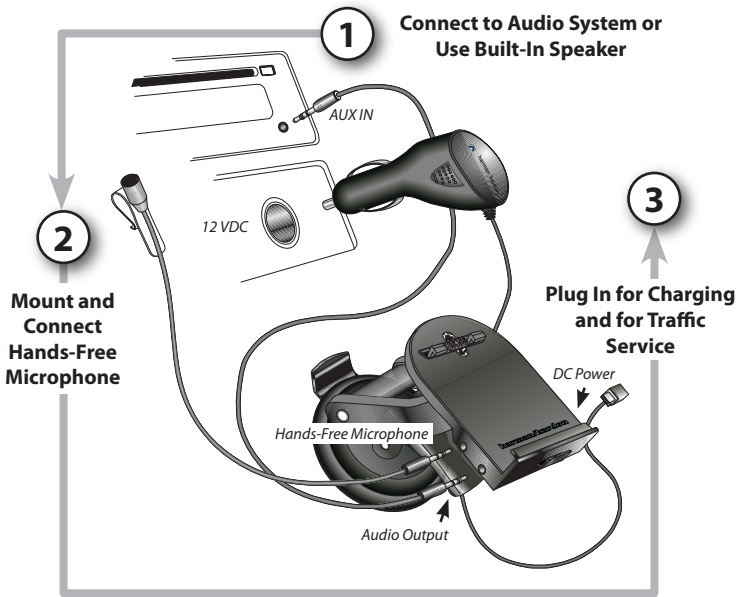
Mounting the Control Knob



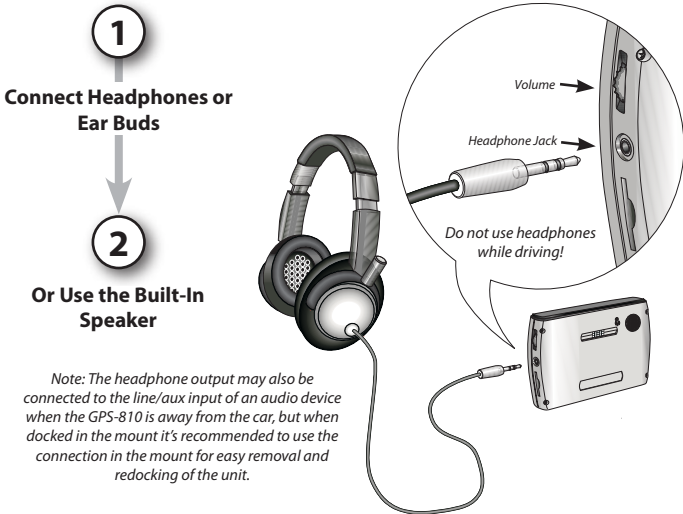
Control Knob Button Operation



Car Connections




Portable Audio



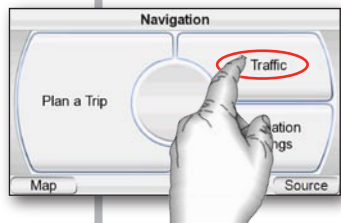
The installation and use suggestions provided by the manufacturer may be subject to restrictions or limitations by federal, state or local laws. The user should determine whether the installation and use of this device is governed by any law prior to installation or use. For more information, please consult the user's manual online at <http://www.guideandplay.com>.

Activate Traffic Service

1 Go outdoors to obtain GPS signal reception




2 While you have GPS reception, choose "Traffic"



3 Your GPS 810 will generate a unique ID number

Note: Once the ID number has been generated, it won't change. You can complete this procedure now or later, but the subscription to traffic service begins when the number is generated.

Do NOT Press "Activate" at this time



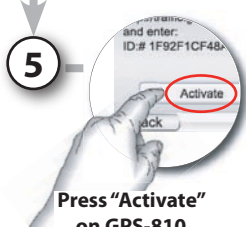
4 Take your GPS 810 to a location where you have internet access and go to:

<http://traffic.guideandplay.com>


Follow the on-screen instructions to enter the required information and your GPS 810's unique ID number into the form on the website.



5 Press "Activate" on GPS-810



6 Enter TMC subscription code from web page, then press "Done"



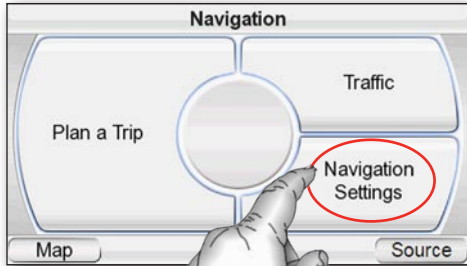
Note: If you've signed up for the 90-day trial subscription, please return to the website to purchase a full subscription when the trial has expired.

Finished!

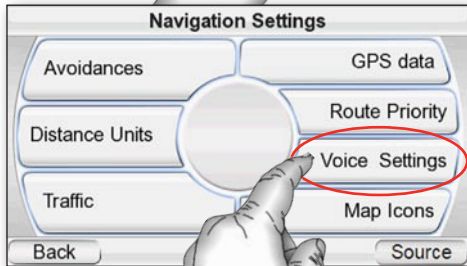
Text to Speech Feature

GPS-810 has a feature called "Text to Speech" in which navigation prompts that appear on the screen as text can be configured to be spoken in one of several voices (male or female). You can choose to have only directions announced or both directions and street names. For example, the voice would say: "In 500 feet, turn left on Lincoln Blvd."

1
Choose
"Navigation
Settings"



2
Choose
"Voice
Settings"



3
Choose
a voice
profile

Finished!



Troubleshooting

Problem/Symptom	Possible Solution
Unit does not turn on at all	Charge battery, check UNLOCK switch
Unit does not have a good GPS signal	Make sure unit has a clear and unobstructed view of the sky
Unit does not have songs/movies	Requires loading to SD card
Computer sees unit as "MTP Device"	Change preference in "Settings" menu
Screen is too bright or too dim	Adjust in "Settings" menu or press rotary wheel on the right side
Volume is too low for navigation prompts	Adjust volume using rotary wheel on the right side or adjust volume of navigation prompts in Volume Mixer (Settings Menu)
Output level is low or distorted when listening to headphones or when using the line output	Increase media player volume in Volume Mixer (Settings Menu)
Suction cup mount is loose	Reposition with moderate force
Screen is loose on mount	Make sure it is securely "clicked" into place on both the bottom and back
Unit is unresponsive, won't power off	Using a paper clip, press the reset button on the right side of the bottom panel
Unit does not show traffic information	Check antenna connection. Activate service.
Unit does not find the <i>Bluetooth</i> [®] phone or device	Ensure the device is enabled for "discovery" or "pairing".
Remote control knob is unresponsive	Try pressing the top, center and right buttons simultaneously for 2 seconds, then turn the outer ring until the highlight bar moves. If the control knob is still unresponsive, try a fresh CR2032 type battery.

This Class B digital apparatus complies with Canadian ICES-003.

Cet appareil numérique de la classe B est conforme à la norme NMB-003 du Canada.

For customer and technical support, call

516.255.4545 (USA only).

Download the complete GPS-810 User's Manual at

www.guideandplay.com.

harman/kardon®

guide + play™

250 Crossways Park Drive, Woodbury, New York 11797
www.harmankardon.com

©2007 Harman International Industries, Incorporated. All rights reserved.

Harman Kardon is a trademark of Harman International Industries, Incorporated, registered in the United States and/or other countries. Guide + Play is a trademark of Harman International Industries, Incorporated.

Part No. 950-0223-001

H A Harman International Company



Please Recycle